

917/301 Botany Road Zetland NSW

1 1

Designed by award-winning architect Koichi Takada Infinity by Crown Group is conveniently located above with direct access into Green Square station and under 5km from the CBD & Sydney Airport.

Type : Apartment
View : <https://www.onlinerealestateagents.com.au/lease/nsw/eastern-suburbs/zetland/residential/apartments/7693000>

Direct access to GS Train Station | Resort Style Living with Pool, Spa, Sauna and Gym Facilities | Rooftop Garden, Sky Lounge | Music and Theatre Room Facilities | Onsite Building Manager and Property Management Office | Ground Floor Retail |

Enjoy the benefits of the 20-minute rule appeal where you can work, live and play all within a 20-minute radius.



Zeynab Melara
0474 336 736



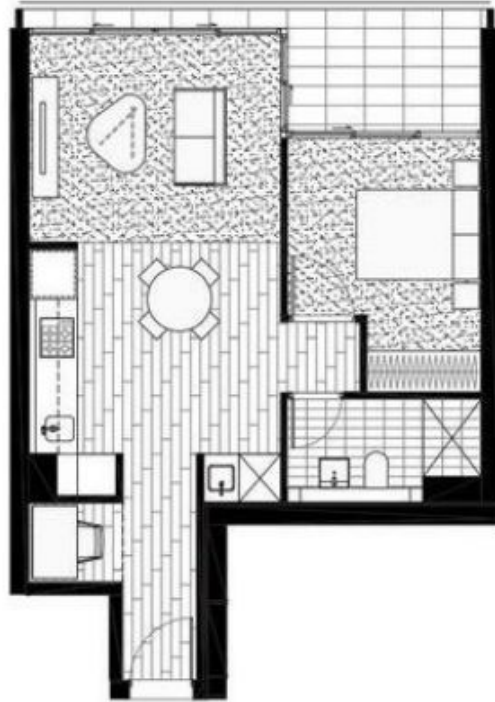
Mahsa Abedi
0411524115

[For full version visit the website](https://www.onlinerealestateagents.com.au)

<https://www.onlinerealestateagents.com.au>

Apartment 0917

1 BEDROOM + MEDIA



301-303 Botany Road, Green Square

INTERNAL	50 m ²
EXTERNAL	8 m ²
TOTAL	58 m ²



Disclaimer: The information and illustrations in this document are illustrative only and are subject to the terms of the contract for sale and the strata plan in the contract for sale. Any furniture or appliances depicted (including possible appliance locations) are illustrative only and not part of the property sold. The schedule of finishes in the contract for sale records the inclusions sold with the property. Purchasers must rely on their own enquiries and the information in the contract for sale.