

733/106-116 Epsom Road Zetland NSW

3 2 2

Register your interest today!

Discover luxury living in this brand-new apartment on Level 7, constructed by the renowned Deicorp. This stunning residence features 3 spacious bedrooms, 2 modern bathrooms, and 2 dedicated parking spaces. Situated in the heart of Downtown, this fantastic apartment offers the perfect blend of style, comfort, and convenience. Enjoy high-end finishes, contemporary design, and unparalleled city views in your new urban oasis.

Key Features:

? Brand New Construction: Built by the renowned Deicorp, ensuring top-quality craftsmanship and modern design.

? Prime Location: Situated on Level 7 in the heart of

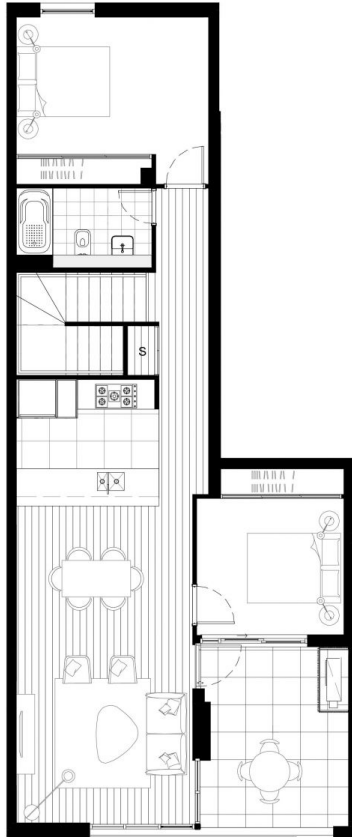
View : <https://www.onlinerealestateagents.com.au/lease/nsw/eastern-suburbs/zetland/residential/apartment/8075719>



**Mahsa Abedi**  
0474 336 736



Level 7



Level 8

- \* Retractable Sink Mixer included
- \* 900mm Cooktop and Oven included
- \* Integrated Fridge included
- \* 2 Tone Robe included

Scale: 1/1000 1/1000 1/1000

# D DOWNTOWN ZETLAND

## BUILDING B

APT.  
B7.13

3 | 2

TOTAL 128

INTERNAL 115  
EXTERNAL 13



106 - 116 EPSOM ROAD ZETLAND, NSW  
DOWNTOWNZETLAND.COM.AU  
1300 219 453

**DEICORP** | **BOSTON**  
Design, Develop, Deliver. MARKETING

Updated 30th November 2021. Note: this plan is a guide only and does not constitute an offer or contract. Please note that changes may be made to the development during construction and elements such as areas, fittings, fixtures etc. may change without notice. All parties should rely on their own investigation to validate this information as it is not guaranteed. No liability will be accepted for any inaccuracy or misstatement.